



IPC

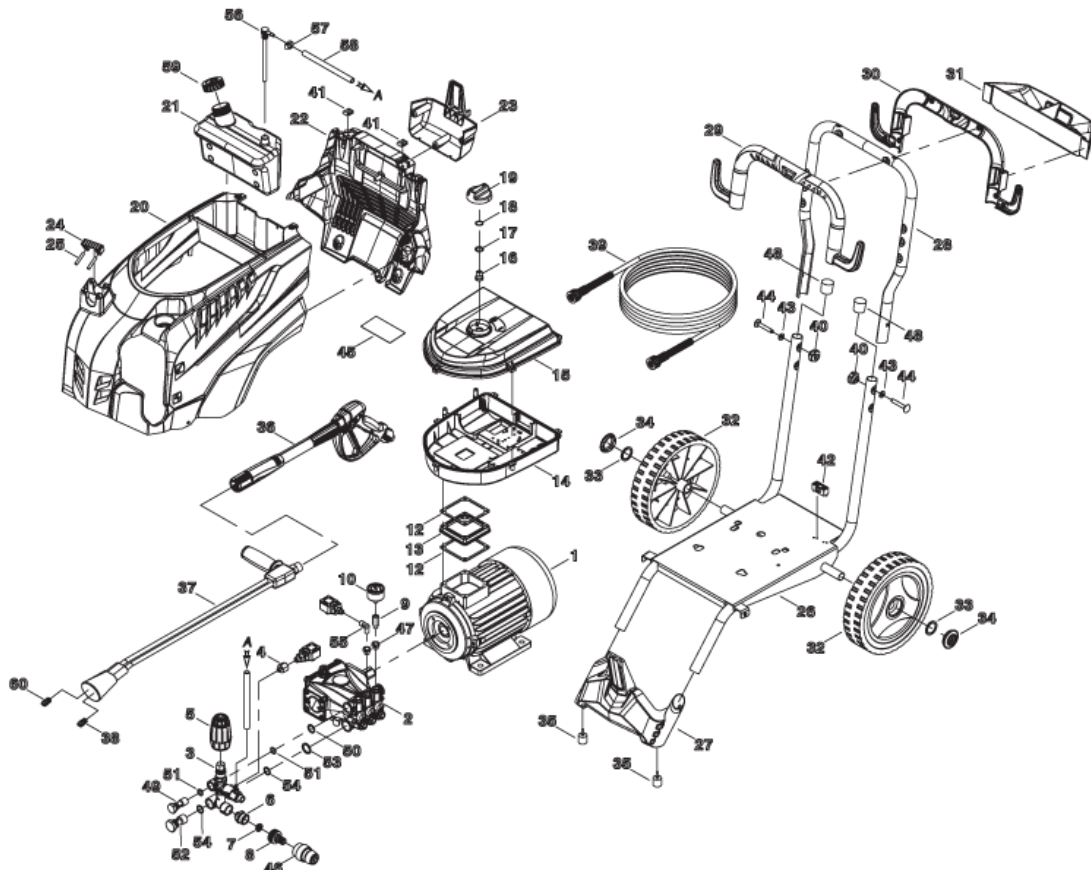
Spare parts list

Ref: IDAF41010

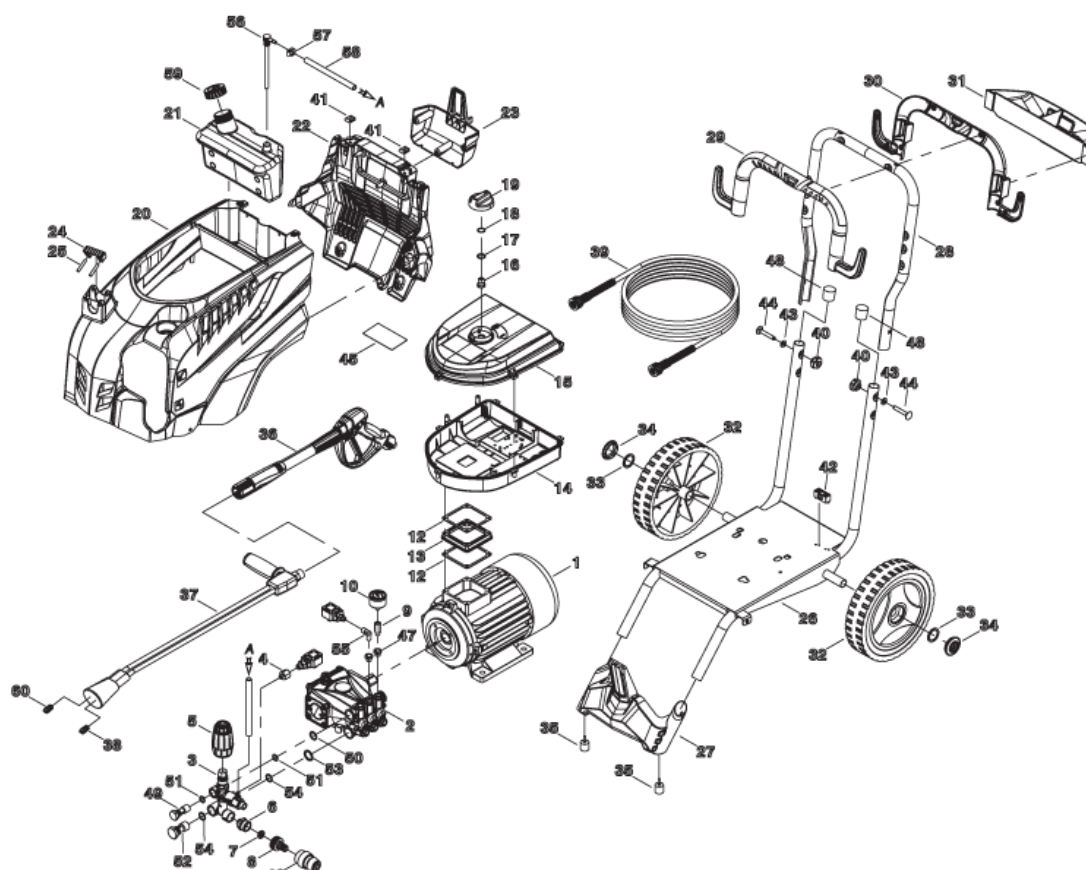
Cust.ref: .

Model: NETTOYEUR PW-C45 DP1310P4 M230/50IC

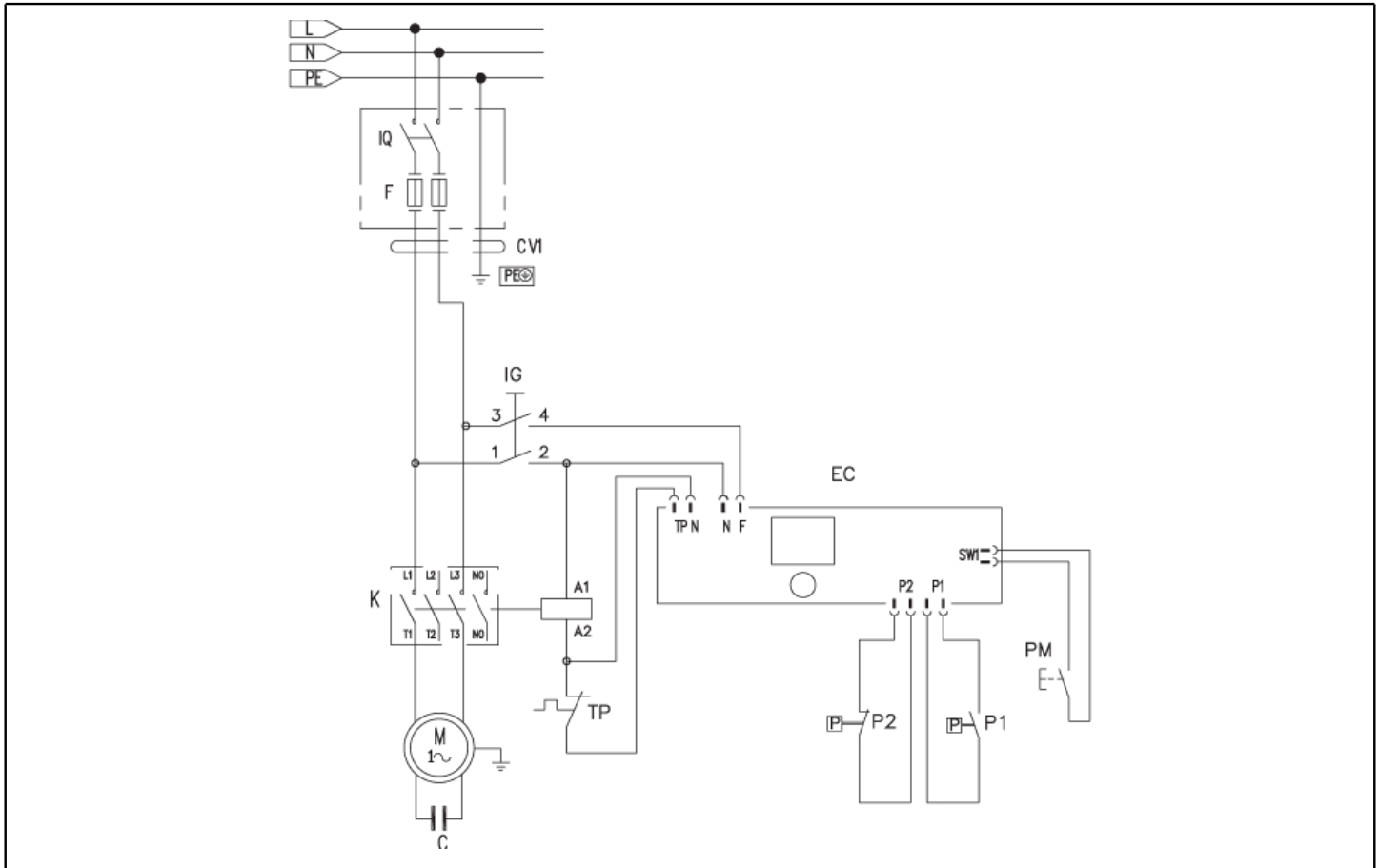
Cust.model: PW 150/11 SRI X



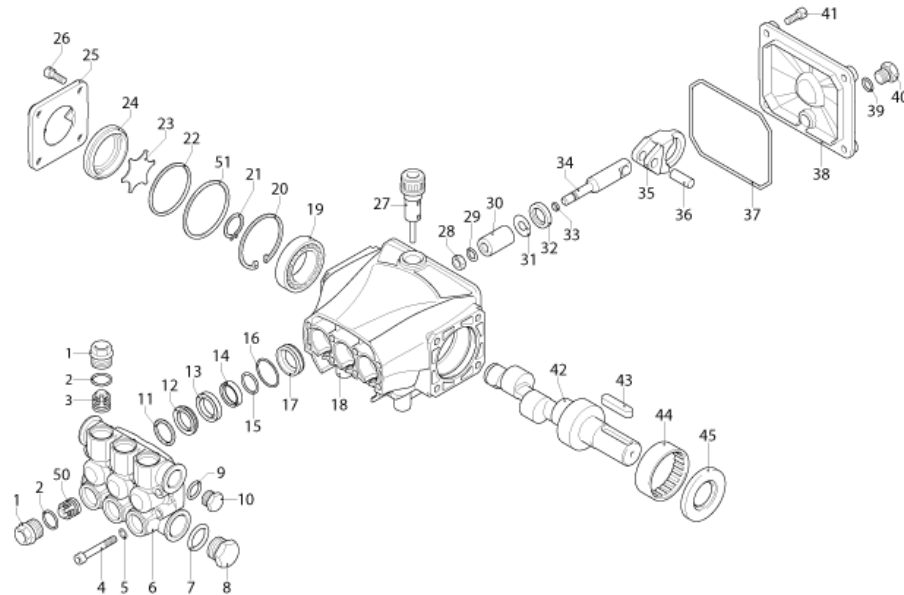
| Ref. K | Part n. | Part n. 2 | Description | Quantity | Validity | | Price |
|--------|-----------|-----------|--|----------|------------|------------|-------|
| | | | | | From | To | |
| 0001 | MOMO40074 | | MOTEUR 1PH C45/AC HP 3 230-50 4P k | 1,00 | | | -- |
| 0002 | PPAP40054 | | POMPE RC 10.12 DX N | 1,00 | | | -- |
| 0003 | VVAZ40029 | | SOUPAPE VRF-2 AR-R AF I.2.1 | 1,00 | | | -- |
| 0004 | RCDS59682 | 00059682 | BOUCHON 1/8 M OT.NIK EI.CN | 1,00 | | | -- |
| 0004 | RCDS40266 | | MANCHON 1/8-1/4 M/F OT. | 1,00 | | | -- |
| 0005 | MPVR40471 | | POIGNEE VRF-2 A.s.f. | 1,00 | 01/04/2018 | | -- |
| 0006 | RCDS87610 | 00087610 | NIPPLE 3/4 - 1/2 CB D.13.0 | 1,00 | | | -- |
| 0007 | FTDT12702 | 00012702 | FILTRE PA | 1,00 | | | -- |
| 0008 | RCVR29600 | 00029600 | PRISE PTC 3/4 F | 1,00 | | | -- |
| 0012 | GUGO10881 | 00010881 | JOINT M.E.L. 73X73 | 2,00 | | | -- |
| 0013 | MPVR40927 | | ENTRETOISE PW-C45 EME H.45.0 ABS | 1,00 | | | -- |
| 0014 | MPVR40938 | | BOITE CONTROLE PW-C45 P/H90 ABS BK. | 1,00 | | | -- |
| 0015 | MPVR40908 | | COUVERCLE BOITE PW-C45 ABS BK. | 1,00 | | | -- |
| 0016 | MPVR23482 | 00023482 | TALON TEC. TUV | 1,00 | | | -- |
| 0017 | GUGO25527 | 00025527 | O-RING D. 14 X 3 NBR 70SH | 1,00 | | | -- |
| 0018 | VTRS40008 | | RONDELLE D. 3.2X 9 X0,8 NYL | 2,00 | | | -- |
| 0019 | MPVR49057 | 00049057 | POIGNEE NOIRE P176-M.RACE PA6 | 1,00 | | | -- |
| 0020 | MPVR40903 | | COUVERTURE VERT PW-C45 PPL V.368C | 1,00 | | | -- |
| 0021 | MPVR40914 | | RESERVOIR PW-C45 PEHD.NT | 1,00 | | | -- |
| 0022 | MPVR40904 | | PANNEAU POST. PW-C45 PP BK. | 1,00 | | | -- |
| 0023 | MPVR40909 | | PORTE-OUTIL PW-C45 PP BK. | 1,00 | | | -- |
| 0024 | MPVR40485 | | CAOUTCHOUC PW-H35 15-20BK. | 1,00 | | | -- |
| 0025 | MPVR40534 | | PIVOT PW-H35 PP BK. | 2,00 | | | -- |
| 0026 | LAFN40977 | | CHARIOT PW-C45 | 1,00 | | | -- |
| 0027 | MPVR40905 | | PETIT PIED PW-C45 PP BK. | 1,00 | | | -- |
| 0028 | LAFN40991 | | POIGNEE PW-C45/55 BK. | 1,00 | | | -- |
| 0029 | MPVR40910 | | DEMI-COQUE PW-C45 ANT. PP BK. | 1,00 | | | -- |
| 0030 | MPVR40911 | | DEMI-COQUE PW-C45 PST. PP BK. | 1,00 | | | -- |
| 0031 | MPVR40915 | | PORTE-OUTIL PW-C45 HAN.PP BK. | 1,00 | | | -- |
| 0032 | RTRT40019 | | ROUE D.250-D.20X 58 RES BK. | 2,00 | | | -- |
| 0033 | VTRS28558 | 00028558 | RONDELLE D.20 | 2,00 | | | -- |
| 0034 | MPVR40734 | | ENJOLIVEUR D.50 G-48/IPC GR.368C | 2,00 | | | -- |
| 0035 | MPVR60553 | 00060553 | PETIT PIED GOMMA 20X20 AQ EPDR50 | 2,00 | | | -- |
| 0036 | IPPR40025 | | POIGNEE G 6000+P.330 +M22 SW.M 2V | 1,00 | | | -- |
| 0037 | LCPR89116 | | RALLONGE DOUBLE PD 50 M22 M -1/4F INX MV | 1,00 | | | -- |
| 0038 | UGLN11196 | 00011196 | BUSE SPS 1/4 15035 | 1,00 | | | -- |
| 0039 | TBAP40062 | | TUYAU H.P. R1 MT 15 5/16" C/2 IRV ZC | 1,00 | | | -- |
| 0040 | VTVR40062 | | PETIT VOLANT F 8MA THF40 +CAP | 2,00 | | 14/07/2018 | -- |
| 0040 | VTVR40066 | | PETIT VOLANT F 8MA 3R.ZE | 2,00 | 15/07/2018 | | -- |
| 0040 | VTDD40019 | | ECROU M 8 ZC.BK. UNI 5588 | 2,00 | 15/07/2018 | | -- |
| 0041 | VTVR40064 | | PLAQUETTE M 5 SP.1.5 BR. | 2,00 | | | -- |
| 0042 | MEVR20906 | 00020906 | COLLIER DE SER. KSM | 1,00 | | | -- |
| 0043 | VTRS00504 | 00000504 | RONDELLE D. 8 ZC. UNI 6592 | 2,00 | | | -- |
| 0044 | VTVT40070 | | VIS M 8X 50 TTQST UNI 5731 | 2,00 | | | -- |



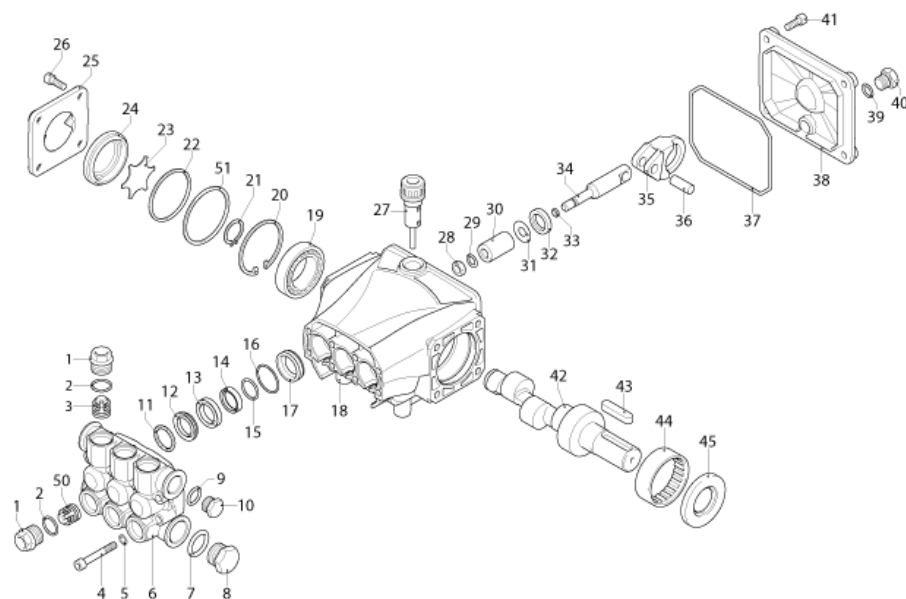
| Ref. K | Part n. | Part n. 2 | Description | Quantity | Validity | | Price |
|--------|-----------|-----------|---------------------------------|----------|----------|----|-------|
| | | | | | From | To | |
| 0045 | ETET41212 | | ETICHETTE PW-C45 PLC | 1,00 | | | -- |
| 0045 | ETET47822 | 00047822 | ETICHETTE LED POL. | 1,00 | | | -- |
| 0046 | RCVR29602 | 00029602 | RACCORD D. 1/2"-5/8" PTC | 1,00 | | | -- |
| 0047 | PVVR40183 | | BOUCHON AR RC C/F. 1/8F+OR | 1,00 | | | -- |
| 0048 | MPVR01696 | 00001696 | EMBOUT D.25 1.02.107 | 2,00 | | | -- |
| 0049 | RCDS40172 | | VIS CREUSE 3/8 VRF-2 OT 4F. | 1,00 | | | -- |
| 0050 | RCDS40282 | | TIRANT L= 120 -2 O-RING | 1,00 | | | -- |
| 0050 | VTRS00548 | 00000548 | RONDELLE D.17,5X23X1,5 (3/8)RM | 1,00 | | | -- |
| 0051 | GUGO03510 | 00003510 | O-RING D. 12.37 X 2.62 NBR 70SH | 2,00 | | | -- |
| 0052 | RCDS40171 | | VIS CREUSE G 1/2 VRF-2 OT. 2F. | 1,00 | | | -- |
| 0053 | VTRS00549 | 00000549 | RONDELLE D.21,5X27X1,5 (1/2) RM | 1,00 | | | -- |
| 0054 | GUGO01048 | 00001048 | O-RING D. 15.88 X 2.62 NBR 70SH | 2,00 | | | -- |
| 0055 | RCDS40176 | | COUDE 1/8" M/F CN. L=24 OT. | 1,00 | | | -- |
| 0057 | FSVR11957 | 00011957 | COLLIER D. 9.5-12 CLIC | 1,00 | | | -- |
| 0058 | TBBP93804 | | TUYAU B.P. D. 6- 9 | 1,15 | | | -- |
| 0059 | MPVR40756 | | BOUCHON BAC KSM C/F. | 1,00 | | | -- |
| 0060 | UGLN05174 | 00005174 | BUSE 1/4 5040 OT | 1,00 | | | -- |



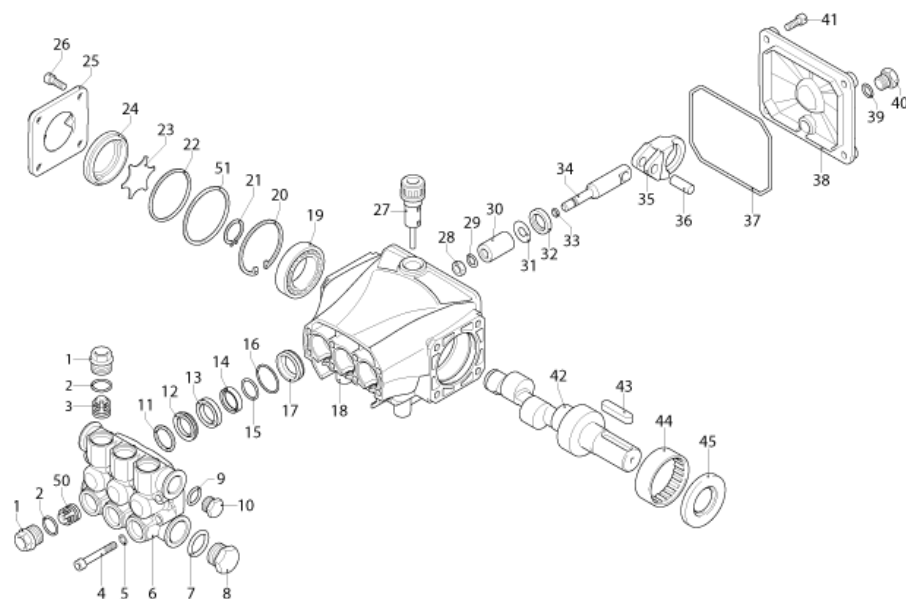
| Ref. K | Part n. | Part n. 2 | Description | Quantity | Validity | | Price |
|--------|-----------|-----------|--------------------------------------|----------|----------|----|-------|
| | | | | | From | To | |
| C | MECO47428 | 00047428 | CONDENSEUR 70 MF 450V FST.D.50X120 | 1,00 | | | -- |
| K | METT40012 | | TELERUPTEUR SIE 3RT 2017-1AP01 230V | 1,00 | | | -- |
| IG | MECI40020 | | INTERRUPTEUR BRM BP. 0-1 12A | 1,00 | | | -- |
| PM | MECI40041 | | INTERRUPTEUR IDS P9-2B F-(0) /RO 3A | 1,00 | | | -- |
| P1 | MEPF40036 | | PRESSOSTAT MTM 1/8M NA/NC 15B. MICRO | 1,00 | | | -- |
| P2 | MEPF39901 | 00039901 | PRESSOSTAT MTM 1/4M NA/NC 15B. MICRO | 1,00 | | | -- |
| TM | METY40027 | | MINUTEUR THV/1Pr.D.220-5/60 30S.2P | 1,00 | | | -- |
| TM | METY40024 | | MINUTEUR THV/1Pre. 220-5/60 30S.2P | 1,00 | | | -- |
| CV1 | MECB40191 | | CABLE H05 VVF 3X1.5 L=5.500 SP. | 1,00 | | | -- |



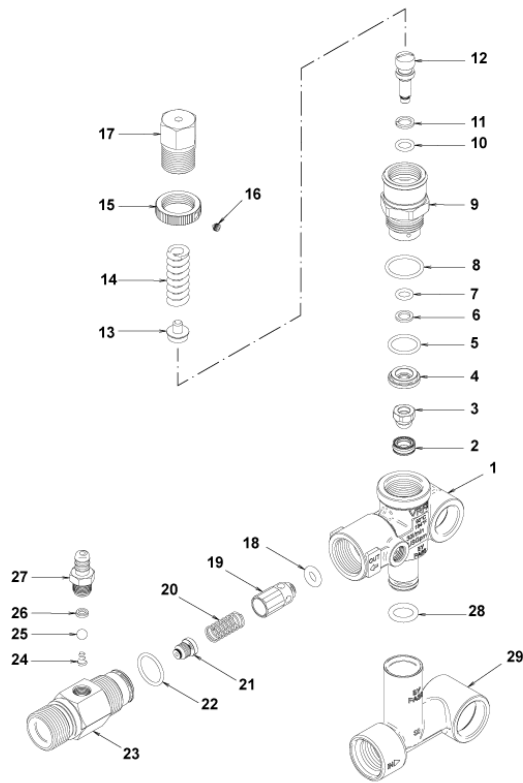
| Ref. K | Part n. | Part n. 2 | Description | Quantity | Validity | | Price |
|--------|-------------|-----------|----------------------------------|----------|------------|------------|-------|
| | | | | | From | To | |
| 0001 | PVVR40120 | | BOUCHON AR RC | 6,00 | | | -- |
| 0002 | GUGO03505 | 00003505 | O-RING D. 15.6 X 1.78 NBR 70SH | 6,00 | | | -- |
| 0003 | S VVAM40002 | | ENSEMBL. CLAPET RC | 6,00 | | 31/08/2012 | -- |
| 0003 | S VVAM40002 | | ENSEMBL. CLAPET RC | 3,00 | 01/08/2012 | | -- |
| 0004 | VTVT06236 | 00006236 | VIS TCCE UNI 5931 6X40 ZB | 8,00 | | | -- |
| 0005 | VTRS01077 | 00001077 | RONDELLE D. 6,4X10X0,7 | 8,00 | | | -- |
| 0006 | MFVR40019 | | CULASSE AR RC OT. | 1,00 | | | -- |
| 0007 | GUGO19245 | 00019245 | O-RING D. 17.5 X 2 NBR 70SH | 1,00 | | | -- |
| 0008 | PVVR40121 | | BOUCHON 1/2 M RC | 1,00 | | | -- |
| 0009 | GUGO09720 | 00009720 | O-RING D. 14 X 1.78 NBR 70SH | 1,00 | | | -- |
| 0010 | PVVR40099 | | BOUCHON 3/8 M HRM | 1,00 | | | -- |
| 0011 | S PVVR40122 | | BAGUE DE TETE D. 18 RC | 3,00 | | | -- |
| 0012 | S GUVR40035 | | BAGUE D'ETANCH. D. 18 RC H.P. | 3,00 | | | -- |
| 0013 | PVVR40123 | | BAGUE INTERMED. D. 18 RC | 3,00 | | | -- |
| 0014 | S GUVR40036 | | BAGUE D'ETANCH. D. 18 RC L.P. | 3,00 | | | -- |
| 0015 | S GUVR40037 | | BAGUE ANTIEXTR. D.21 | 3,00 | | | -- |
| 0016 | S GUGO19290 | 00019290 | O-RING D. 23.52 X 1.78 NBR 70SH | 3,00 | | 31/03/2014 | -- |
| 0016 | GUGO08182 | 00008182 | O-RING D. 21.91 X 1.78 NBR 70SH | 3,00 | 01/04/2014 | | -- |
| 0017 | PVVR40124 | | BAGUE P.GARNIT. D. 18 RC | 3,00 | | | -- |
| 0018 | MFVR40020 | | CARTER POMPE AR RC | 1,00 | | 31/03/2014 | -- |
| 0018 | MFVR40027 | | CARTER POMPE AR RCS | 1,00 | 01/04/2014 | | -- |
| 0019 | CUVR28336 | 00028336 | ROULEM.A BILLES 6304 | 1,00 | | | -- |
| 0020 | VTAE09661 | 00009661 | BAGUE D'ARRET D. 52 UNI 7437 | 1,00 | | | -- |
| 0021 | VTAE06193 | 00006193 | BAGUE D'ARRET D. 20 UNI 7435 | 1,00 | | | -- |
| 0022 | GUGO02561 | 00002561 | O-RING D. 47.3 X 2.62 NBR 70SH | 1,00 | | | -- |
| 0023 | PVVR40125 | | DISQUE RC | 1,00 | | | -- |
| 0024 | PVVR40126 | | VOYANT HUILE RC | 1,00 | | | -- |
| 0025 | MFVR40021 | | COUVERCLE CART. AR RC LT. | 1,00 | | | -- |
| 0026 | VTVT01531 | 00001531 | VIS TE 6X 16 UNI 5739 | 4,00 | | | -- |
| 0027 | PVVR19231 | 00019231 | BOUCHON HUILE XTS | 1,00 | | 31/03/2014 | -- |
| 0027 | PVVR40436 | | BOUCHON HUILE RC | 1,00 | 01/04/2014 | | -- |
| 0028 | VTDD00483 | 00000483 | ECROU M 8 ZIN UNI 5588 | 3,00 | | | -- |
| 0029 | VTRS19394 | 00019394 | RONDELLE D. 8X13X0,5 | 3,00 | | | -- |
| 0030 | S PIVR40005 | | PISTON D.18X30 RC | 3,00 | | | -- |
| 0031 | PVVR19233 | 00019233 | DISQUE XTS | 3,00 | | | -- |
| 0032 | S GUGO09690 | 00009690 | JOINT SPI 15X 24X 5 NBR70 | 3,00 | | | -- |
| 0033 | GUGO08071 | 00008071 | O-RING D. 4.48 X 1.78 NBR 70SH | 3,00 | | | -- |
| 0034 | PVVR40127 | | TIGE DE PISTON RC | 3,00 | | | -- |
| 0035 | BLVR40001 | | BIELLE RC | 3,00 | | | -- |
| 0036 | PVVR40128 | | CHEVILLE-GOUJON D. 9X23 RC | 3,00 | | | -- |
| 0037 | GUGO18695 | 00018695 | O-RING D. 101.27 X 2.62 NBR 70SH | 1,00 | | | -- |
| 0038 | MFVR40022 | | COUVERCLE CART. AR RC | 1,00 | | | -- |
| 0039 | GUGO01036 | 00001036 | O-RING D. 10.82 X 1.78 NBR 70SH | 1,00 | | | -- |
| 0040 | PVVR40129 | | BOUCHON 1/4 M RC | 1,00 | | | -- |



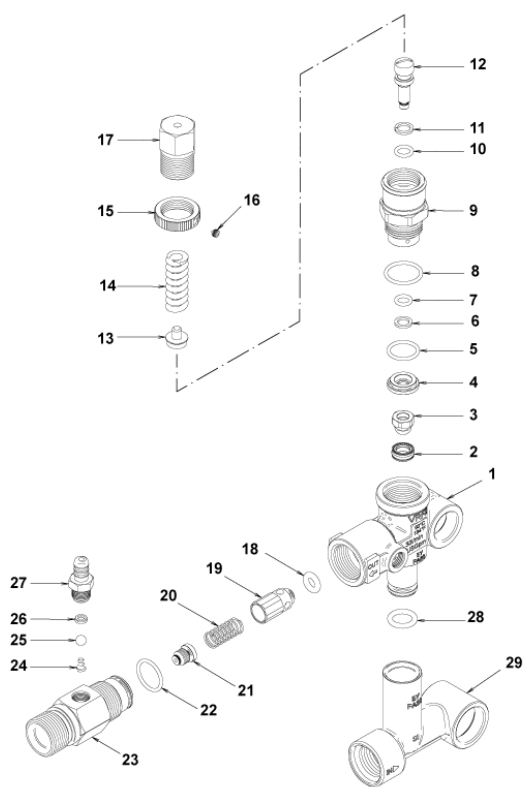
| Ref. K | Part n. | Part n. 2 | Description | Quantity | Validity | | Price |
|--------|-------------|-----------|----------------------------|----------|------------|----|-------|
| | | | | | From | To | |
| 0041 | VTVT09913 | 00009913 | VIS TCEI 6X16 UNI5931 | 4,00 | | | -- |
| 0042 | ALMO40007 | | ARBRE AR RC 10LT VRS. N | 1,00 | | | -- |
| 0043 | VTVR41531 | 00041531 | CLAVETTE 8X 7X35 UNI 6604A | 1,00 | | | -- |
| 0044 | CUVR23636 | 00023636 | ROULEM.A ROUL. HK 4516 | 1,00 | | | -- |
| 0045 | S GUGO00999 | 00000999 | JOINT SPI 25X 52X 7 NBR70 | 1,00 | | | -- |
| 0050 | S VVAM40007 | | ENSEMBL. CLAPET RC ASP. BK | 3,00 | 01/08/2012 | | -- |
| 0051 | PVVR40437 | | BAGUE D. 51.8 X0.5 | 1,00 | 01/04/2014 | | -- |



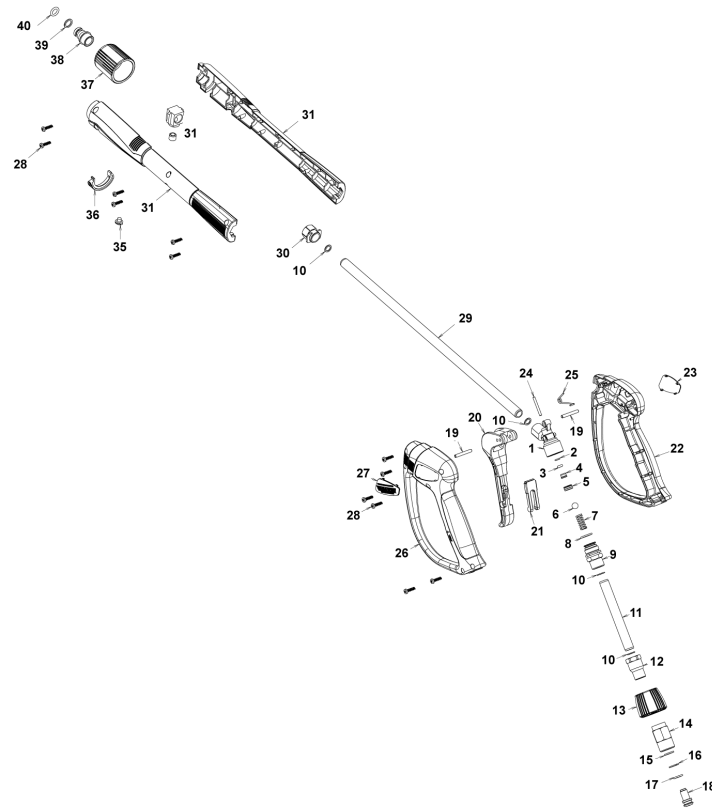
| Ref. Part n. | Cust. part n. | Description | Reference | Price |
|--------------|---------------|-------------------------------|---------------------|-------|
| KTRI40092 | | KIT P 15-2186 RC | 0003 | -- |
| KTRI40093 | | KIT P 15-42917 RC | 0030 | -- |
| KTRI40094 | | KIT P 15-42919 D.18 RC | 0012 0014 0015 0016 | -- |
| KTRI40095 | | KIT P 15-42903 D.18 RC | 0011 | -- |
| KTRI40096 | | KIT P 15-42918 RC | 0032 0045 | -- |
| KTRI40207 | | KIT P 15-42914 RC 3+3 BL./WH. | 0003 0003 | -- |



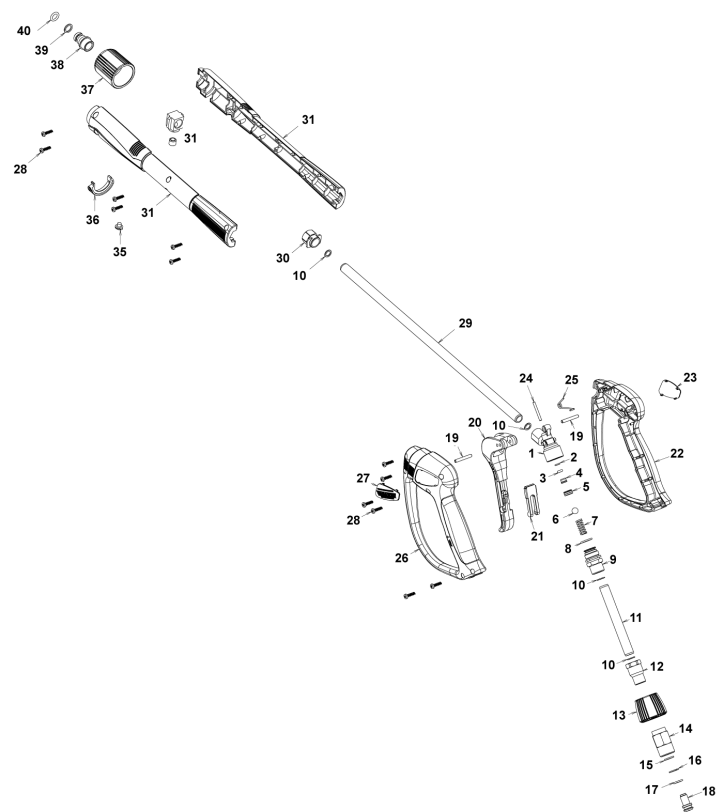
| Ref. K | Part n. | Part n. 2 | Description | Quantity | Validity | | Price |
|--------|-----------|-----------|------------------------------------|----------|----------|----|-------|
| | | | | | From | To | |
| 0001 | PVVR40375 | | CORPS VALVE VRF2 +G1/8 F | 1,00 | | | -- |
| 0002 | S | PVVR40363 | SIEGE SOUPAPE MV124 +OR | 1,00 | | | -- |
| 0003 | S | PVVR40364 | OBTURATEUR MV124 | 1,00 | | | -- |
| 0004 | S | PVVR40365 | ENTRETOISE MV124 | 1,00 | | | -- |
| 0005 | S | GUGO12322 | O-RING D. 14 X 1.78 NBR 90SH | 1,00 | | | -- |
| 0006 | S | GUVR40072 | BAGUE ANTIEXTR. D. 6.5X 9.4 | 1,00 | | | -- |
| 0007 | S | GUGO83861 | O-RING D. 6.07 X 1.78 NBR 90SH | 1,00 | | | -- |
| 0008 | S | GUGO24913 | O-RING D. 17.17 X 1.78 NBR 90SH | 1,00 | | | -- |
| 0009 | S | PVVR40366 | RACCORD VRF2 D.10 | 1,00 | | | -- |
| 0010 | S | GUGO03500 | O-RING D. 6.75 X 1.78 NBR 70SH | 1,00 | | | -- |
| 0011 | S | GUVR40073 | BAGUE ANTIEXTR. D. 7.1X10 X1.2 TBT | 1,00 | | | -- |
| 0012 | S | PVVR40367 | PETIT PISTON D.10 VRF2 | 1,00 | | | -- |
| 0013 | PVVR40368 | | COUPELLE RESS. MV124 25B | 1,00 | | | -- |
| 0014 | MLML40027 | | RESSORT D. 3.0/6.0 X38.85 | 1,00 | | | -- |
| 0015 | PVVR40369 | | FRETTE MV167.09 | 1,00 | | | -- |
| 0016 | VTVT89696 | | VIS EI-ST 4X 4 UNI5927 ZC | 1,00 | | | -- |
| 0017 | PVVR40370 | | CAPUCHON VRF2 M18X1 | 1,00 | | | -- |
| 0018 | S | GUGO46053 | O-RING D. 6 X 3 NBR 90SH | 1,00 | | | -- |
| 0019 | S | PVVR40349 | OBTURATEUR VRT3 | 1,00 | | | -- |
| 0020 | S | MLML40026 | RESSORT VRT3 | 1,00 | | | -- |
| 0021 | S | UGEI40010 | BUSE D. 2.1 VRF-2 | 1,00 | | | -- |
| 0022 | S | GUGO12321 | O-RING D. 15.6 X 1.78 NBR 90SH | 1,00 | | | -- |
| 0023 | S | PVVR40376 | CORP DOSEUR. VRF-2 M22 M | 1,00 | | | -- |
| 0024 | S | MLML47996 | RESSORT D. 5.5 | 1,00 | | | -- |
| 0025 | S | SFVR40001 | BILLE D. 7/32" AISI 316/L | 1,00 | | | -- |
| 0026 | S | PVVR47994 | SIEGE BILLE MV 625 | 1,00 | | | -- |
| 0027 | S | PVVR40014 | RACC. P. TUYAU P237-MV | 1,00 | | | -- |
| 0028 | GUGO11225 | 00011225 | O-RING D. 10.78 X 2.62 NBR 70SH | 1,00 | | | -- |
| 0029 | PVVR40373 | | RACCORD VRF2.24 | 1,00 | | | -- |



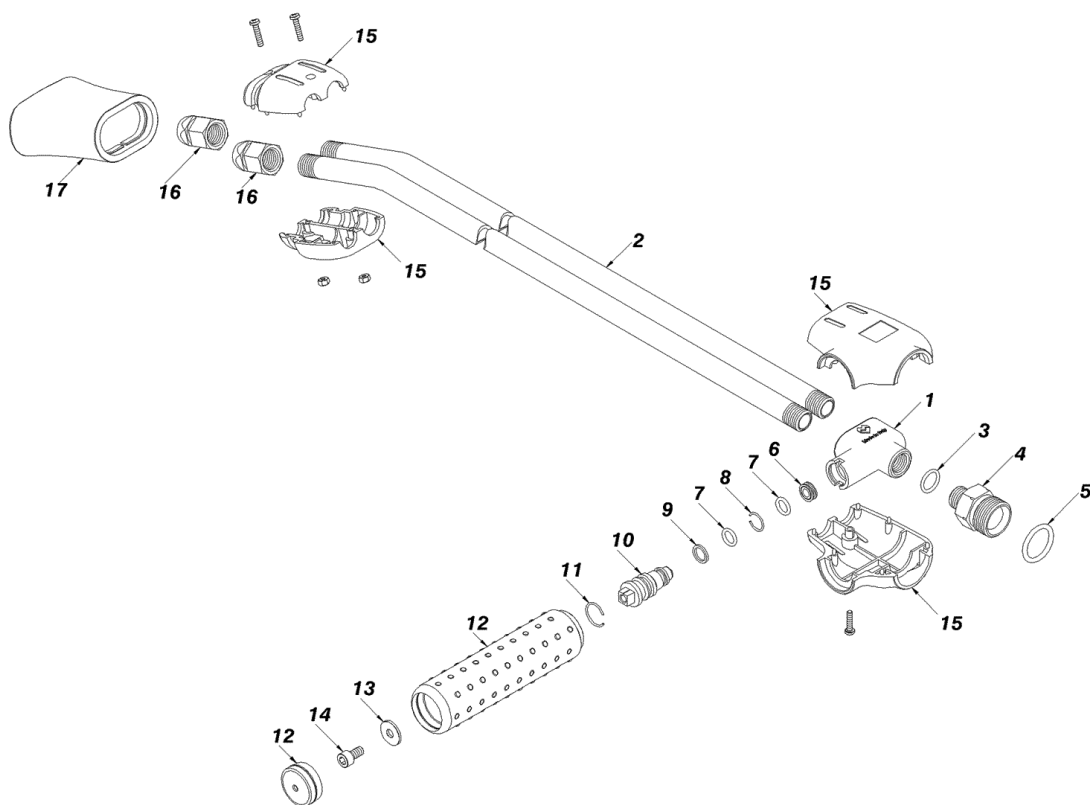
| Ref. Part n. | Cust. part n. | Description | Reference | Price |
|--------------|---------------|-------------------------|--|-------|
| KTRI40236 | | KIT P 14-103 VRF2 | 0002 0003 0004 0005 0006 0007 0008 0009 0010 0011 0012 0018 0019 0020 0021 0022 | -- |
| KTRI40237 | | KIT P 14-104 SEAL VRF2 | 0002 0003 0005 0006 0007 0008 0010 0011 0018 0021 0022 | -- |
| KTRI40259 | | KIT P 14-106 VRF2 I.2.1 | 0018 0019 0020 0021 0022 0023 0024 0025 0026 0027 | -- |



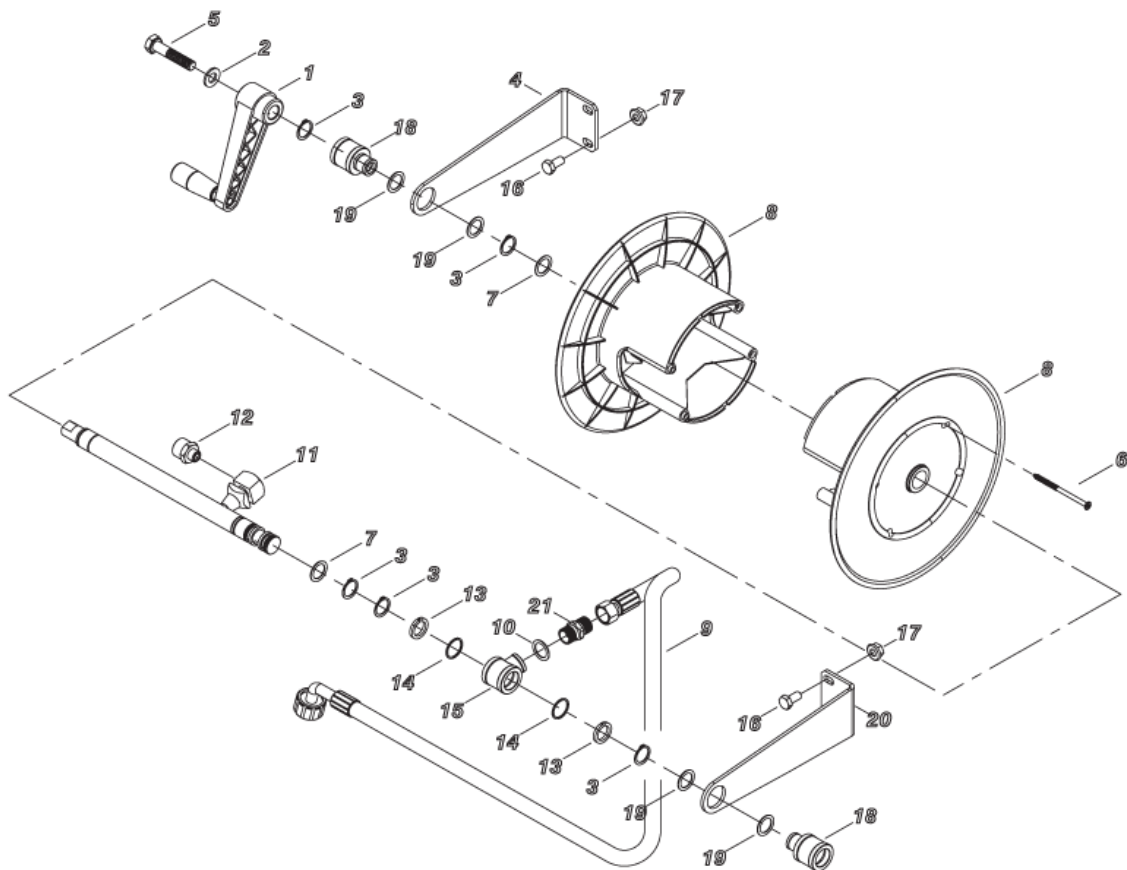
| Ref. K | Part n. | Part n. 2 | Description | Quantity | Validity | | Price |
|--------|-----------|-----------|-------------------------------------|---------------------------------|----------|----|-------|
| | | | | | From | To | |
| 0001 | PVVR40381 | | CORPS PISTOLET G 5100 G1/4F | 1,00 | | | -- |
| 0002 | S | GUVR40074 | BAGUE ANTIEXTR. D. 3 X 7.4X1.3 | 1,00 | | | -- |
| 0003 | S | GUGO21835 | 00021835 | O-RING D. 2.84 X 2.62 VIT. 80SH | 1,00 | | -- |
| 0004 | PVVR40382 | | TIGE DE PISTON G 5100 | 1,00 | | | -- |
| 0005 | S | PVVR40563 | SIEGE BILLE AL36 G6000 + OR | 1,00 | | | -- |
| 0006 | S | SFVR40004 | BILLE D. 5/16" ALL.GR16 | 1,00 | | | -- |
| 0007 | MLML40047 | | RESSORT D. 9.4 x23.5x1.6 G6000 | 1,00 | | | -- |
| 0008 | GUGO12322 | 00012322 | O-RING D. 14 X 1.78 NBR 90SH | 1,00 | | | -- |
| 0009 | PVVR40383 | | RACCORD COLL.G5100 1/4F | 1,00 | | | -- |
| 0010 | VTRS40017 | | RONDELLE D. 8.2X11,4X1.00 | 4,00 | | | -- |
| 0011 | PVVR40384 | | TUYAU G 1/4" L.105 | 1,00 | | | -- |
| 0012 | RCIN40022 | | RACCORD SWIV G5100 1/4F | 1,00 | | | -- |
| 0013 | MPVR40967 | | FRETTE G 6000 SW. GR. | 1,00 | | | -- |
| 0014 | RCIN40021 | | BRANCHEMENT SWIV 5100 M22 | 1,00 | | | -- |
| 0015 | S | GUVR40075 | BAGUE ANTIEXTR. D. 10 X14X1.5 | 1,00 | | | -- |
| 0016 | S | GUVR40076 | BAGUE ANTIEXTR. D. 11.2X14X1.2 | 1,00 | | | -- |
| 0017 | S | GUGO15295 | 00015295 | O-RING D. 10.82 X 1.78 VIT 75SH | 1,00 | | -- |
| 0018 | PVVR40386 | | VIS SW. G 5100 | 1,00 | | | -- |
| 0019 | VTVR40047 | | GOUPILLE D. 4X29 | 2,00 | | | -- |
| 0020 | MPVR40820 | | GACHETTE G 6000-SW | 1,00 | | | -- |
| 0021 | MPVR40821 | | DISP.D.SECURITE G 6000-SW | 1,00 | | | -- |
| 0022 | MPVR40822 | | COQUILLE G 6000-SW DX | 1,00 | | | -- |
| 0023 | MPVR40968 | | PLAQUE G 6000/2 GR.DX | 1,00 | | | -- |
| 0024 | PVVR40564 | | PETIT PISTON G 6000 AL36 SP. | 1,00 | | | -- |
| 0025 | MLML40029 | | RESSORT G 5100 | 1,00 | | | -- |
| 0026 | MPVR40824 | | COQUILLE G 6000-SW SX | 1,00 | | | -- |
| 0027 | MPVR40825 | | PLAQUE G 6000 GR.SX | 1,00 | | | -- |
| 0028 | VTVT40043 | | VIS AF 4X 14 HILO ZN.N | 12,00 | | | -- |
| 0029 | LCPR40181 | | TUYAU 1/4 L=416 ZC. 0° | 1,00 | | | -- |
| 0030 | MPVR40493 | | RACCORD G 5100-SW | 1,00 | | | -- |
| 0031 | MPVR40494 | | PROTECTION P 420 C/AN. | 1,00 | | | -- |
| 0035 | MPVR40198 | | BOUCHON G 5000 | 1,00 | | | -- |
| 0036 | MPVR40495 | | BOUCHON G 5100 REM. | 1,00 | | | -- |
| 0037 | PVVR40119 | | RONDELLE M22X1,5 IRV G5000 | 1,00 | | | -- |
| 0038 | RCIN40048 | | CHEVILLE-GOUJON G 1/4 F IRV G6000/2 | 1,00 | | | -- |
| 0039 | GUVR40034 | | BAGUE ANTIEXTR. D. 10 X14 | 1,00 | | | -- |
| 0040 | GUGO63555 | 00063555 | O-RING D. 9,3 X 2,4 VIT 75SH | 1,00 | | | -- |



| Ref. Part n. | Cust. part n. | Description | Reference | Price |
|--------------|---------------|----------------------------|---------------------|-------|
| KTRI40243 | | KIT P 26- 26 SWIVEL G 5100 | 0015 0016 0017 | -- |
| KTRI40513 | | KIT P 26- 36 G 6000/II | 0002 0003 0005 0006 | -- |



| Ref. K | Part n. | Part n. 2 | Description | Quantity | Validity | | Price |
|--------|-----------|-----------|----------------------------------|----------|------------|------------|-------|
| | | | | | From | To | |
| 0001 | RCGR40000 | | CORPS ROBINET L.DOP. 1/4" MV INX | 1,00 | | | -- |
| 0002 | LCPR46780 | 00046780 | TUYAU 1/4 L=470 INX. | 1,00 | | | -- |
| 0003 | GUGO19194 | 00019194 | O-RING D. 11.11 X 1.78 NBR 70SH | 1,00 | | 30/09/2010 | -- |
| 0003 | VTRS04931 | 00004931 | RONDELLE COPPER D.13X19X1.5 | 1,00 | 01/10/2010 | | -- |
| 0004 | RCIN46781 | 00046781 | RACCORD MALE MV 1/4 -M 22 M | 1,00 | | | -- |
| 0005 | GUGO01056 | 00001056 | O-RING D. 18.72 X 2.62 NBR 70SH | 1,00 | | | -- |
| 0006 | PVVR40019 | | DOUILLE MV LD | 1,00 | | | -- |
| 0007 | GUGO06988 | 00006988 | O-RING D. 7.66 X 1.78 NBR 70SH | 2,00 | | | -- |
| 0008 | PVVR40020 | | BAGUE D'ARRET LD MV D. 8 | 1,00 | | | -- |
| 0009 | GUGO40002 | | BAGUE ANTIEXTR. D. 8 NBR | 1,00 | | | -- |
| 0010 | PVVR40021 | | VIS DE REGLAGE LD MV INX | 1,00 | | | -- |
| 0011 | PVVR46783 | 00046783 | BAGUE D'ARRET LD MV | 1,00 | | | -- |
| 0012 | PVVR46784 | 00046784 | POIGNEE LD MV +CAP | 1,00 | | | -- |
| 0013 | VTRS15958 | 00015958 | RONDELLE UNI 6592 5X15X1,5 ZB | 1,00 | | | -- |
| 0014 | VTVT17639 | 00017639 | VIS TCEI M 5X10 UNI 5931 | 1,00 | | | -- |
| 0015 | MPVR46786 | 00046786 | PROTECTION LD/TB MV | 1,00 | | | -- |
| 0016 | RCVR46787 | 00046787 | PORTE BUSE 1/4-1/4 F MV | 12,00 | | | -- |
| 0017 | PVVR46788 | 00046788 | PROTECTION LD MV | 1,00 | | | -- |



| Ref. K | Part N. | Part N. 2 | Description | Quantity | Validity | | Price |
|--------|-----------|-----------|--|----------|----------|----|-------|
| | | | | | From | To | |
| 0001 | MPVR92147 | | POIGNEE AVV/TUB*SERIE F*138-60 M8 | 1,00 | | | -- |
| 0002 | VTRS00504 | 00000504 | RONDELLE D. 8 ZC. UNI 6592 | 9,00 | | | -- |
| 0003 | VTAE33674 | 00033674 | BAGUE D'ARRET D. 22 UNI 7435 | 5,00 | | | -- |
| 0004 | LAFN41035 | | SUPP.ENROULEUR PW-C45/55 DX | 1,00 | | | -- |
| 0005 | VTVT01573 | 00001573 | VIS TCEI 8X25 UNI5931 | 1,00 | | | -- |
| 0006 | VTVT40006 | | VIS AF TCB-TC 5 X20 HILO INX | 4,00 | | | -- |
| 0007 | VTRS04924 | 00004924 | RONDELLE D.23X 39 | 2,00 | | | -- |
| 0008 | MPVR40581 | | ENROULEUR PRT.ANM PP | 2,00 | | | -- |
| 0009 | TBAP40225 | | TUYAU D.JONCT. 3/ 8 R1 L=700 3/8F -M22 F | 1,00 | | | -- |
| 0010 | VTRS40026 | | RONDELLE 3/8 ZC + NBR 85SH | 1,00 | | | -- |
| 0011 | LAFN41033 | | AXE PW-C45/55 3PZ. | 1,00 | | | -- |
| 0012 | RCIN10577 | 00010577 | RACCORD MALE 1/4MA | 1,00 | | | -- |
| 0013 | GUVR37665 | 00037665 | BAGUE ANTIEXTR. D.17.8X22 X1.5 PTFE | 2,00 | | | -- |
| 0014 | GUGO01032 | 00001032 | O-RING D. 17.13 X 2.62 NBR 70SH | 2,00 | | | -- |
| 0015 | RCDS89862 | | BLOCAGE PRT-P237 G3/8 OT. | 1,00 | | | -- |
| 0016 | VTVT00450 | 00000450 | VIS TE 8X40 UNI5739 | 4,00 | | | -- |
| 0017 | VTDD00492 | 00000492 | ECROU M 8 ZINC | 4,00 | | | -- |
| 0018 | MPVR40518 | | DOUILLE D.28-38/22.5 L=12 PVC N | 2,00 | | | -- |
| 0019 | VTRS40016 | | RONDELLE D.22 X32 X1.2 ZC. | 4,00 | | | -- |
| 0020 | LAFN41034 | | SUPP.ENROULEUR PW-C45/55 SX | 1,00 | | | -- |
| 0021 | RCDS00610 | 00000610 | NIPPLE 3/8 - 3/8 SV | 1,00 | | | -- |