



**IPC**

## **Spare parts list**

Ref: ASDO15516

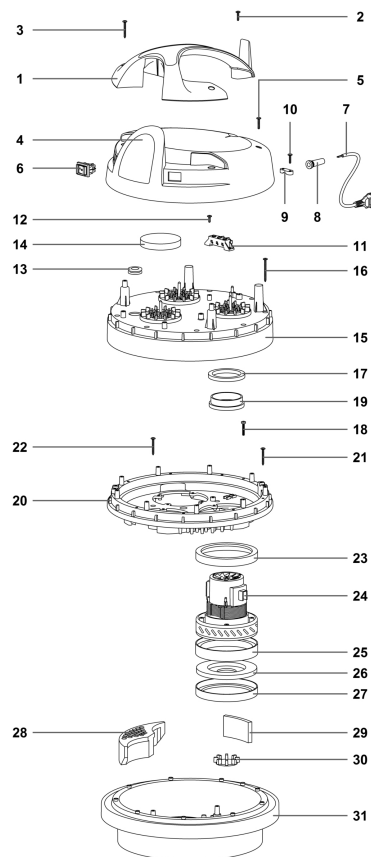
Model: ASPIRATEUR GS3/78CYC TOPPER 429 CYC



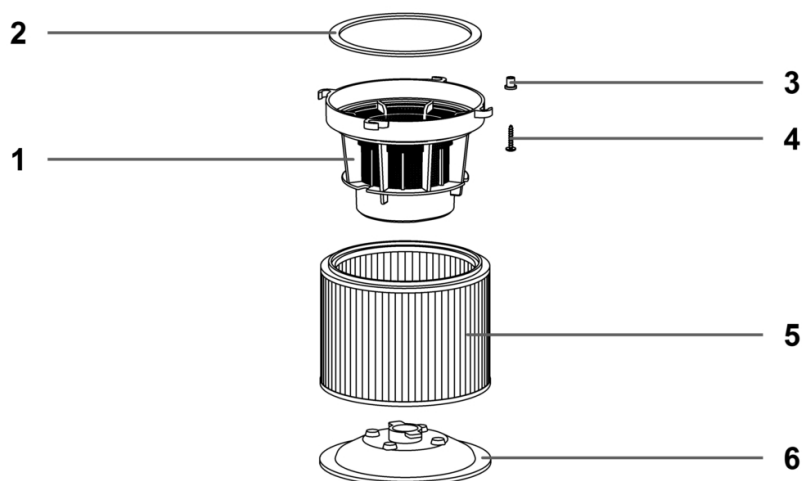
IPC Integrated Professional Cleaning

**IPC Soteco**

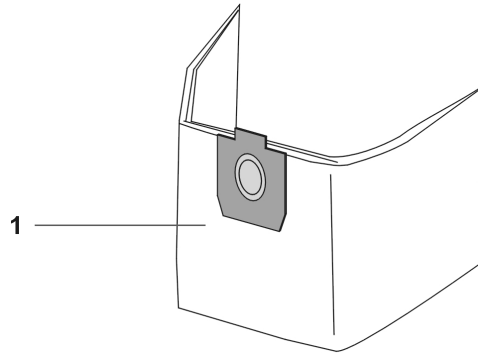
Ref. K	Part n.	Part n. 2	Description	Quantity	Validity		Price
					From	To	
0001	PMTA08599		CULASSE TOPPER 433 C/P VEI/NE	1,00			--
0002	KTRI04357	04245 ECO	KIT FILTRANTE C/CART.HEPA ALT.=125 H13	1,00			--
0003	FTDP00462	00338-SC-TEX	SAC FILTRE MICROFIBRA 338-SC-TEX	1,00			--
0004	PMFU02611		BARIL DEC.400 G/F S/F COMP ICS	1,00			--
0005	PMVR06069	06637	CYCLONE 400 COMP.	1,00			--
0006	PMFU02651		BARIL 400 BASC. CYC A430 NE/VEI	1,00			--
0007	CARR01375	03251	CHAR.BASCULANTE 400	1,00			--



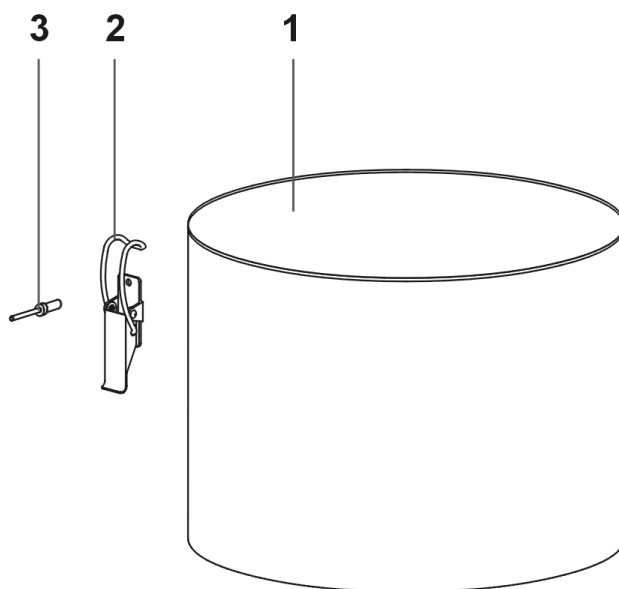
Ref. K	Part n.	Part n. 2	Description	Quantity	Validity		Price
					From	To	
*	MECB01818	07632 L TP 1200	CABLAGE 50CM MOTEUR-TP 1200	3,00			--
*	FSVR00127	01106	COLLIER	4,00			--
*	MECB35712	01107	FIL AVEC RESISTANCE	1,00			--
0001	MPVR08307	020727VEI	POIGNEE TOPPER 600 VERT IPC	1,00			--
0002	VTVT71961	01006	VIS T.1/2 CROIX 5X20	1,00			--
0003	VTVT72106	02627	VIS PAT TMT PHL 5X40	2,00			--
0004	PMVR06241		COUVERCLE TOPPER 600 NE 3INT	1,00			--
0005	VTVT72055	01979	VIS "TC" CROIX 5X30	2,00			--
0006	MECI28744	00484	INTERRUPTEUR LUMINEUX PROTEGE	3,00			--
0007	MECB31445	04062	CABLE ELECTRIQUE 2X1,5 (DOMO)	1,00			--
0008	MEVR28673	00138	PASSE CABLE	1,00			--
0009	MPVR28690	00139	ARRET DE CABLE	1,00			--
0010	VTVT71961	01006	VIS T.1/2 CROIX 5X20	1,00			--
0011	MEVR02008	03494	PLAQ.BORNES430/433/440-630/633/640R	1,00			--
0012	VTVT71960	01005	RAPIDFIX 5X15	2,00			--
0013	MEVR72017	01502	PASSE TUBE RACCORD RAPIDE	1,00			--
0014	FTDP38064	03937	FILTRE MTP/65 H=15 D.95	3,00			--
0015	MPVR08519	021768VEI	COUVERTURE 600 VERT IPC	1,00			--
0016	VTVT40007	03273	VIS PAT TMT 5X55 PHL 5X55	9,00			--
0017	MPVR38371	03969	RONDELLE H8 D85X65	3,00			--
0018	VTVT01181	03189	VIS TC CROIX M 5X30 UNI 7687	1,00			--
0019	MPVR86282	00310	BAGUE MOTORE H=7 (15) PLAST.	3,00			--
0020	MPVR89502	02937NE	SERRE-MOTEUR NEV.600 NOIR	1,00			--
0021	VTVT72106	02627	VIS PAT TMT PHL 5X40	9,00			--
0022	VTVT72106	02627	VIS PAT TMT PHL 5X40	3,00			--
0023	GUGO28683	03901	JOINT "L" SANS TROU H=5,5	3,00			--
0024	MOMO40006	020047	MOTEUR 1200W 240V BS 282	3,00			--
0025	GUVR00397	07711	JOINT "L" S/F H=16	3,00			--
0026	MPVR89143	07164	ENTRETOISE MIR. M.ST.	3,00			--
0027	GUGO28683	03901	JOINT "L" SANS TROU H=5,5	3,00			--
0028	FTDP38057	03454	TRIANGLE PHONO MTP/30	3,00			--
0029	FTDP28745	03456	JOINT MTP/30 AU-AD 50X10X125	3,00			--
0030	MPVR28748	00468	AUTOMATIQUE VALVE	3,00			--
0031	MPVR38059	03108 PNE	EMBASE 600/400 A/PLAQUE ANTIS.NOIR	1,00			--



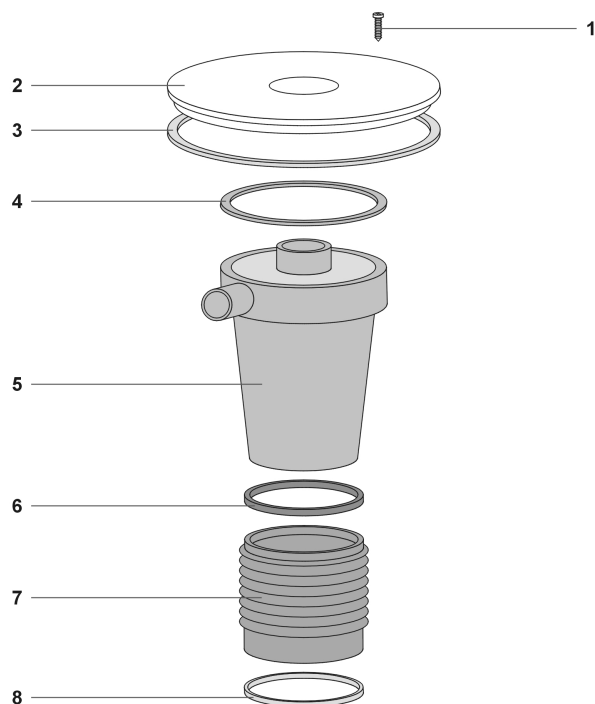
Ref. K	Part n.	Part n. 2	Description	Quantity	Validity		Price
					From	To	
0001	MPVR40590	021242NE	CORPS MIR. L. 99B 2V.	1,00			--
0002	GUVR40078	03735-2	JOINT H3 DS50	1,00			--
0003	MPVR35796	03706	DOUILLE PLAST. D.8	4,00			--
0004	VTVT36751	03724	VIS PAT TMT PHL 5X25	4,00			--
0005	FTDP28843	02881	CARTOUCHE HEPA ALT.=125 H13	1,00			--
0006	MPVR28723	02855	DISQUE SERRE FILTRE COMPL.	1,00			--



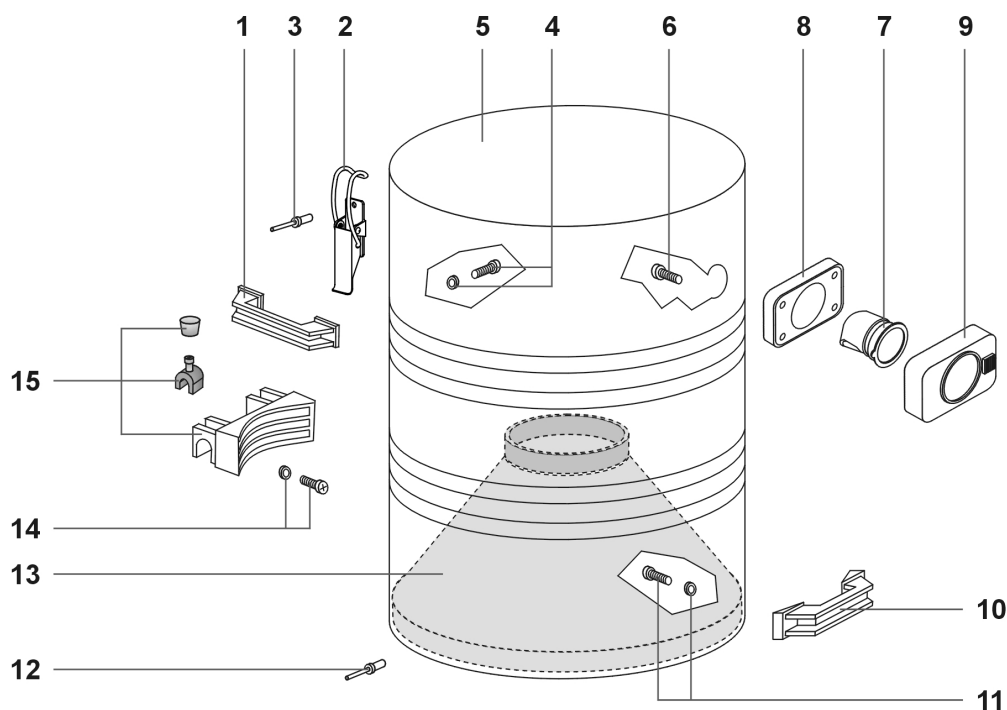
Ref. K	Part n.	Part n. 2	Description	Quantity	Validity		Price
					From	To	
0001	FTDP00462	00338-SC-TEX	SAC FILTRE MICROFIBRA 338-SC-TEX	1,00			--
0001	FTDP00462	00338-SC-TEX	SAC FILTRE MICROFIBRA 338-SC-TEX	1,00			--



Ref. K	Part n.	Part n. 2	Description	Quantity	Validity		Price
					From	To	
0001	LAFN10862		BARIL DEC.400 H=330 A430 S/F IC	1,00			--
0002	CHVR40000	07390	CROCHET LEVIER DGN MT.UNV.	2,00			--
0003	VTVR71991	01301	RIVET 5X11	4,00			--

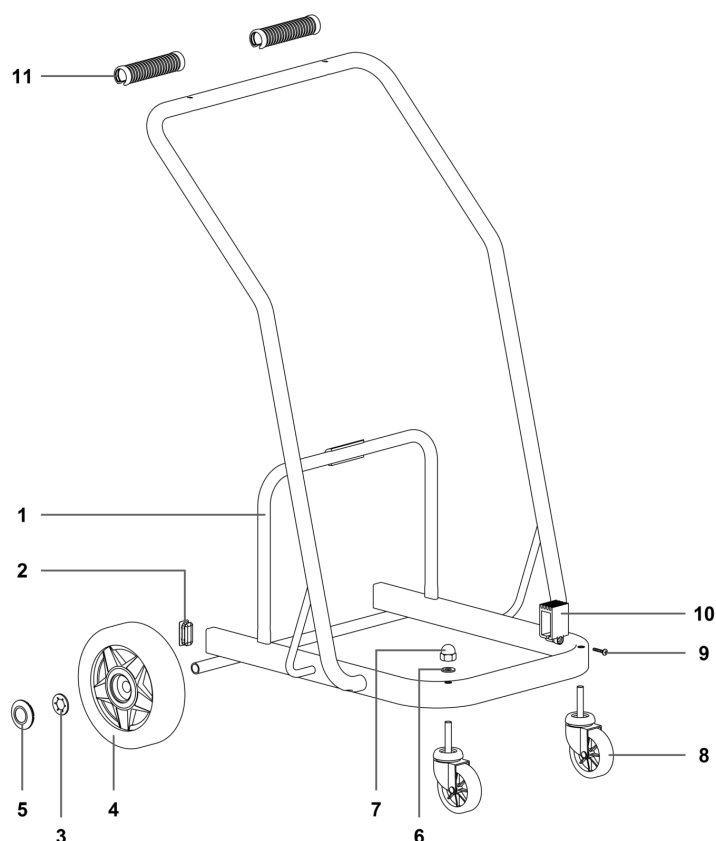


Ref. K	Part n.	Part n. 2	Description	Quantity	Validity		Price
					From	To	
0001	VTVT71960	01005	RAPIDFIX 5X15	4,00			--
0002	MPVR10450	03179	SUPPORT CICLONE 400	1,00			--
0003	GUVR37740	03180	JOINT MIR. D.600 L=1200	1,00			--
0004	GUVR40021	02921A-1	JOINT DGN. "600"	1,20			--
0005	MPVR10474	03609	COULISSEAU CICLONE A/CONE	1,00			--
0006	CNPR00407	03537	ELASTIQUE D.75X15 H	1,00			--
0007	MPVR06690	03425	PROTECTION D.80	1,00			--
0008	FSVR72169	03068	COLLIER 8M 78/98	1,00			--



Ref. K	Part n.	Part n. 2	Description	Quantity	Validity		Price
					From	To	
0001	MPVR28737	02993-1NE	POIGNEE NEW V.F.	2,00			--
0002	CHVR40000	07390	CROCHET LEVIER DGN MT.UNV.	2,00			--
0003	VTVR71991	01301	RIVET 5X11	4,00			--
0004	RIGE00015	03968	TENUE COMPLETE A/VIS L=25	4,00			--
0005	LAFN08314	03644	BARIL 400 CICL.B.H=685 AISI 430	1,00			--
0006	VTVT72055	01979	VIS "TC" CROIX 5X30	4,00			--
0007	MPVR09191	02767 COND	DEFLECTEUR 99/60 CONDUCTRICE	1,00			--
0008	MPVR08670	02586 COND	JOINT R 205 CONDUCTEUR	1,00			--
0009	MPVR11445		GOULOTTE 99/60 NE P/VEI A/G5 COND	1,00			--
0010	MPVR28737	02993-1NE	POIGNEE NEW V.F.	1,00			--
0011	RIGE00015	03968	TENUE COMPLETE A/VIS L=25	2,00			--
0012	VTVR71991	01301	RIVET 5X11	4,00			--
0013	MPVR10471	03509	TAPIS DE TRANS. 400 CICLONE	1,00			--
0014	RIGE00015	03968	TENUE COMPLETE A/VIS L=25	4,00			--
0015	MPVR06993	020233	GR.CHARNIERE BASC COMP	1,00			--

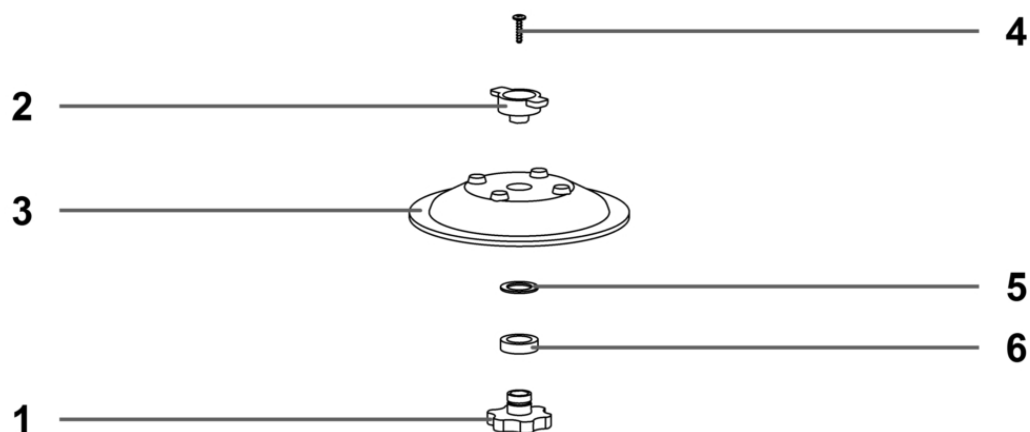




Ref. K	Part n.	Part n. 2	Description	Quantity	Validity		Price
					From	To	
0001	LAFN09997	03250-1	STR.METALLIQUE 400 BASCULANTE	1,00			--
0002	MPVR06136	00976	CAPUCHON EN PLA 40X20	2,00			--
0003	MPVR86321	02557	BLOC. D.18	2,00			--
0004	RTRT85069	00904	ROUE ARRIERE D.200	2,00			--
0005	MPVR85070	03835NE	BOUCHON NOIR D.47.8 CR.X2-X3	2,00			--
0006	VTRS71964	01012	RONDELLE 10	2,00			--
0007	VTDD72234	00478	ECROU 10 MA	2,00			--
0008	RTRT21167	00479	ROUE AVANT	2,00			--
0009	VTVT72055	01979	VIS "TC" CROIX 5X30	4,00			--
0010	MPVR06691	03450	PETIT PIED SUPPORT BASCULANTE	4,00			--
0011	MPVR02288	06250	POIGNEE CHARIOT PLAST.	2,00			--



Ref. K	Part n.	Part n. 2	Description	Quantity	Validity		Price
					From	To	
0001	GUVR40078	03735-2	JOINT H3 DS50	1,00			--
0001	GUVR40078	03735-2	JOINT H3 DS50	1,00			--



Ref. K	Part n.	Part n. 2	Description	Quantity	Validity		Price
					From	To	
0001	MPVR07254	020544	POIGNEE ATTACHE RAPIDE	1,00			--
0002	MPVR07253	020543	CROCHET ATTACHE RAPIDE	1,00			--
0003	MPVR06630	02821	DISQUE SUPPORT FILTRE	1,00			--
0004	VTVT71961	01006	VIS T.1/2 CROIX 5X20	1,00			--
0005	VTRS00418	03011	RONDELLE P.P. 30X20X1,5	1,00			--
0006	VTRS00419	03012	RONDELLE CAOUTC. SPONGIEUX 30X20X8	1,00			--