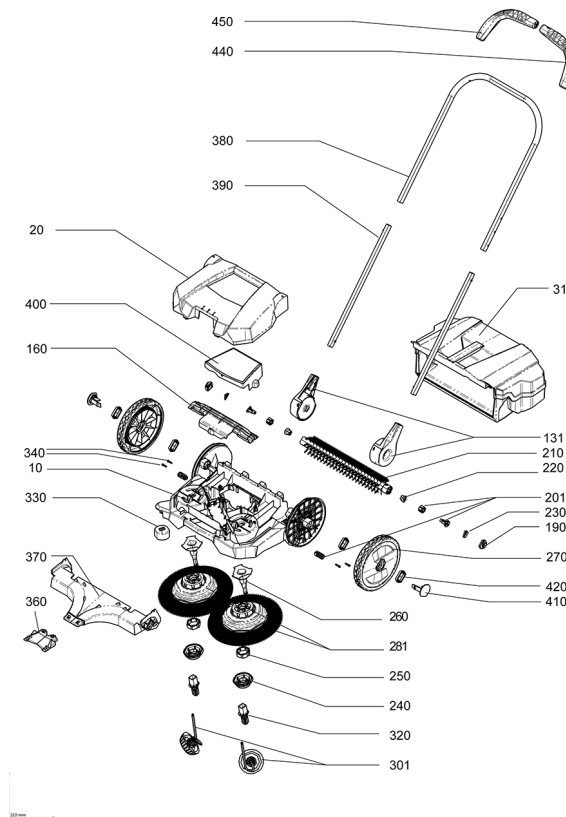




IPC

Spare parts list

Ref: MSUT00763
Model: BALAYEUSE 550M ICA



| Ref. K | Part n. | Part n. 2 | Description | Quantity | Validity | | Price |
|--------|-----------|-----------|-----------------------------|----------|----------|----|-------|
| | | | | | From | To | |
| 0010 | MPVR11907 | | CHASSIS GANSOW 550M | 1,00 | | | -- |
| 0020 | MPVR11908 | | CARTER GANSOW 550M | 1,00 | | | -- |
| 0031 | MPVR11909 | | TIROIR GANSOW 550M | 1,00 | | | -- |
| 131 | MPVR11911 | | SUPPORT GANSOW 550M | 1,00 | | | -- |
| 160 | MPVR11912 | | SUPPORT GANSOW 550M | 1,00 | | | -- |
| 190 | CUVR00269 | | ROULEMENT 6803-2RS | 1,00 | | | -- |
| 201 | MPVR11924 | | GALET TENDEUR 550M | 1,00 | | | -- |
| 210 | SPPV02216 | | BROSSE GANSOW 550M | 1,00 | | | -- |
| 220 | MPVR11923 | | PIGNON 550M | 1,00 | | | -- |
| 230 | CUVR00266 | | ROULEMENT 6803-2RS | 1,00 | | | -- |
| 240 | MPVR11913 | | SUPPORT GANSOW 550M | 1,00 | | | -- |
| 250 | MPVR11914 | | FRICTION GANSOW 550M | 1,00 | | | -- |
| 260 | MPVR11915 | | SUPPORT GANSOW 550M | 1,00 | | | -- |
| 270 | RTRT00681 | | ROUE GANSOW 550M | 1,00 | | | -- |
| 281 | SPPV02217 | | BROSSE GANSOW 550M | 1,00 | | | -- |
| 301 | RTRT00682 | | ROUE GANSOW 550M | 1,00 | | | -- |
| 320 | MPVR11918 | | MANCHON GANSOW 550M | 1,00 | | | -- |
| 330 | MPVR11919 | | GUIDE GANSOW 550M | 1,00 | | | -- |
| 340 | VTVT01715 | | VIS TX20 | 1,00 | | | -- |
| 360 | MPVR11920 | | TAPIS DE TRANS. GANSOW 550M | 1,00 | | | -- |
| 370 | MPVR11910 | | SUPPORT GANSOW 550M | 1,00 | | | -- |
| 380 | LAFN11245 | | POIGNEE GANSOW 550M | 1,00 | | | -- |
| 390 | LAFN11246 | | TUYAU GANSOW 550M | 1,00 | | | -- |
| 400 | MPVR11917 | | COUVERCLE GANSOW 550M | 1,00 | | | -- |
| 410 | MPVR11916 | | BORNE GANSOW 550M | 1,00 | | | -- |
| 420 | CUVR00267 | | ROULEMENT 6807-2RS | 1,00 | | | -- |
| 440 | MPVR11921 | | COUVERTURE GANSOW 550M SX | 1,00 | | | -- |
| 450 | MPVR11922 | | COUVERTURE GANSOW 550M DX | 1,00 | | | -- |